



SHANDONG HERACLES MACHINERY CO., LTD.

Website: www.heracles.cc
Email: heracles@swgm.cc
Tel/Fax: +86-536-3251687
Mobile Phone: +86-13258070039
Add:No.1499,Linglongshan Road, Qingzhou,Weifang, Shandong, China(Mainland)

Products are constantly upgrading, pictures / configuration / data for reference only in the catalog,subject to change without notice.



HERACLES

CUSTOMIZATION IS OUR STANDARD



HERACLES INTRODUCE



Shandong Heracles Machinery Co., Ltd. is a professional manufacturer of ODM and OEM specialized in the research and production of streamline type construction machinery with stable quality, with the perfect combination of price and performance, we mainly have the following products: wheel loader, backhoe loader, telescopic loader, hydraulic dumper, wheel dozer, mini excavator, tractor, self-loading concrete mixer and the attached fittings.

The core competition of HERACLES lies in the high quality and ceaseless innovation. We adopts international quality management system and cooperates with world-renowned suppliers, for example, some famous with EPA Tier3 or Tier4 and EURO Tier 3 or Tier4 approve engine manufacturer of CUMMINS, YANMAR, KOHLER and so on, hydraulic system manufacturer of some imported brands from America and Italy, transmission system manufacturer of some famous brands of ZF and so on. Our machines are convenient for repair and maintenance in local. We provide with professional technical supports and products pre-sales train service supports, as well as after-sale service of 7*24 hours and overseas technical personnel train. Development engineers of HERACLES are seeking for new, stable and reliable ways continuously to innovate all of our machines, that's enough for HERACLES to deal with anything at any time.

HERACLES regards products quality as the life of the enterprise, so we check the complements strictly, control the products quality and repay our customers with best products, customers' demands/personal tailor is the development orientation of our products. We would like to share how we will realize our promise, welcome your valuable advice and questions. By excellent products, superior service and reasonable price, HERACLES has won a broad market, the products have not only been sold well at home to more than 20 provinces and cities, but also been exported to many countries such as Russia, Germany, Canada, USA, UK, France, Ireland, Sweden, Poland, Finland, Denmark, Holland, Australia, Brazil, Vietnam, Bulgaria, Argentina and so on. We are now seeking for chances to cooperate with global retail traders and agencies, so as to help more customers to provide with one stop machinery solutions.



TL1000

TELESCOPIC
BOOM LOADER



MAIN TECHNICAL SPECIFICATION

- 1.0 Engine Details
 (1) Model: Chinese CHANGCHAI engine
 (2) Engine type: In-line arrangement, water-cooled, four-cycle diesel Engine
 (3) Rated Power: 25KW
 (4) Optional Brand: YUNNEI 37KW or XINCHAI Euro3/EPA engine or EPA3/EPA4 YANMAR engine or EPA4 KOHLER engine or EPA4 CUMMINS engine
- 2.0 Transmission System
 Hydraulic converter + drive shaft + 130 axles (drum brake)
- 3.0 Bucket
 (1) Bucket Capacity: 0.5 m³
 (2) Bucket width: 1400mm
 (3) Bucket type: Heavy-duty bolt on teeth
 (5) Rated Load: 1000kg including attachment or bucket
- 4.0 Overall Dimensions
 (1) Overall Length: 4900mm
 (2) Overall Height: 2500mm
 (3) Overall Width: 1400mm
 (4) Max. lifting Height: 3600mm
 (5) Max. Bucket hinge pin Height: 3000mm
- 5.0 Operating Specifications
 (1) Steering System: Articulated Frame with hydraulic power steering
 (2) Driving System: Hydraulic converter, four wheel drive
 (3) Standard quick coupling: CAT style or VOLVO style or BOBCAT style
 (4) Mechanical pilot joystick
 (5) Steady rise.
- 6.0 Brake System
 (1) Service Brake: Four wheel expanding shoe drum brake
 (2) Parking Brake: Hand operated
- 7.0 Tyre
 (1) Model: 10-16.5 (2) Width: 280mm (3) Diameter: 760mm
 (2) Optional Model: 12-16.5 or 31*15.5-15 wider tubeless tire
- 8.0 Wheelbase: 2150mm
 9.0 Track: 1345mm
 10.0 System pressure: 16Mpa;
 11.0 Hydraulic output: 70L/min
 12.0 Machine weight: 3300KG

MAIN TECHNICAL SPECIFICATION

- 1.0 Engine Details
 (1) Model: Chinese Yunnei engine
 (2) Engine type: In-line arrangement, water-cooled, four-cycle diesel Engine
 (3) Rated Power: 42KW
 (4) Optional Model: XINCHAI Euro3/EPA engine or YANMAR EPA3/EPA4 engine or EPA4 KOHLER/CUMMINS engine
- 2.0 Transmission System
 Hydraulic converter + drive shaft + Isuzu axles (Disc brake)
- 3.0 Bucket
 (1) Bucket Capacity: 0.65 m³
 (2) Bucket width: 1600mm
 (3) Bucket type: Heavy-duty bolt on teeth
 (5) Rated Load: 1500kg including attachment
- 4.0 Overall Dimensions
 (1) Overall Length: 5900mm
 (2) Overall Height: 2710mm
 (3) Overall Width: 1800mm
 (4) Max. lifting Height: 4700mm
 (5) Max. Bucket hinge pin Height: 4200mm
- (6) Max. Unloading Height: 3700mm
 (7) Max. Turning Radius: 5500mm (Outer of bucket)
 (8) Min. Turning Radius: 4700mm (Outer of front tire)
 (9) Min. Turning Radius: 4500mm (Outer of rear tire)
- 5.0 Operating Specifications
 (1) Steering System: Articulated Frame with hydraulic power steering
 (2) Driving System: Hydraulic converter, four wheel drive
 (3) Standard quick release: CAT style or VOLVO style or BOBCAT style
 (4) Mechanical pilot joystick
 (5) Steady rise.
- 6.0 Brake System
 (1) Service Brake: Four wheel disc brake
 (2) Parking Brake: Hand operated
- 7.0 Tyre
 (1) Model: 23.5/70-16 (2) Width: 330mm (3) Diameter: 920mm
 (2) Optional Model: 12-16.5 or 31*15.5-15 wider tubeless tire
 8.0 Wheelbase: 2355mm
 9.0 Track: 1415mm
 10. System pressure: 16Mpa; Hydraulic output: 70L/min
 11. Net weight: 4200KG



TL1500

TELESCOPIC
BOOM LOADER



TL2000

TELESCOPIC
WHEEL LOADER



MAIN TECHNICAL SPECIFICATION

- 1.0 Engine Details
 (1) Model: YUNNEI Turbocharged Engine
 (2) Engine Type: In-line arrangement, water-cooled, four-cycle diesel Engine
 (3) Rated Power: 55KW
 (4) Rated Speed: 2400 r.p.m (rpm)
 (5) Optional Engine: YUNNEI engine (60KW/65KW), YTO engine (60KW), YUCHAI engine (58KW/62KW), CUMMINS engine (60KW), EPA4 CUMMINS/KOHLER engine
- 2.0 Transmission System
 Hydraulic converter + gearbox + drive shaft + hub reduction axles
- 3.0 Bucket
 (1) Bucket Capacity: 1m³
 (2) Bucket width: 1900mm
 (3) Bucket type: Heavy-duty bolt on teeth
 (4) Rated Load: 2000kg including attachment or bucket
- 4.0 Overall Dimensions
 (1) Overall Length: 6600mm
 (2) Overall Height: 2750mm
 (3) Overall Width: 2050mm
 (4) Max. lifting Height: 5000mm
 (5) Lifting to bucket hinge pin Height: 4500mm
 (6) Bucket Unloading Height: 3950mm
 (7) Unloading Distance: 1950mm (Arm extended) 1150mm (Arms recovered)
- 5.0 Operating Specifications
 (1) Steering System: Articulated Frame with hydraulic power steering
 (2) Min Turning Radius: 4800mm (The right front wheel)
 Min Turning Radius: 2300mm (The left rear wheel)
 (3) Driving System: Hydraulic converter, four wheel drive
 (4) Hydraulic joystick control.
- 6.0 Brake System
 (1) Service Brake: Safer air assist disc brake braking system
 (2) Parking Brake: Hand operated (Disc brakes)
- 7.0 Tyre
 (1) Model: 16/70-20 (2) Width: 380mm (3) Diameter: 1075mm
 (2) Optional Model: 16/70-20 Herringbone tire
- 8.0 Wheelbase: 2500mm
 9.0 Track: 1600mm
 10. System pressure: 20Mpa; Hydraulic output: 96L/min
 11. Machine weight: 5800KG

MAIN TECHNICAL SPECIFICATION

- 1.0 Engine Details
 (1) Model: YUNNEI Engine
 (2) Engine Type: In-line arrangement, water-cooled, four-cycle diesel Engine
 (3) Rated Power: 78KW
 (4) Rated Speed: 2400 r.p.m (rpm)
 (5) Optional Engine: YUCHAI engine (78KW), CUMMINS engine (74.5KW)
- 2.0 Transmission System
 Hydraulic converter + gearbox + drive shaft + hub reduction axles
- 3.0 Bucket
 (1) Bucket Capacity: 1.3m³
 (2) Bucket width: 2200mm
 (3) Bucket type: Heavy-duty bolt on teeth
 (5) Rated Load: 2500kg including bucket or attachment
- 4.0 Overall Dimensions
 (1) Overall Length: 6800mm
 (2) Overall Height: 2900mm
 (3) Overall Width: 2200mm
 (4) Max. lifting Height: 5700mm
 (5) Lifting to bucket hinge pin Height: 5200mm
- (6) Bucket Unloading Height: 4500mm
 (7) Unloading Distance: 2000mm (Arm extended) 1200mm (Arms recovered)
- 5.0 Operating Specifications
 (1) Steering System: Articulated Frame with hydraulic power steering
 (2) Min Turning Radius: 4700mm (The right front wheel)
 Min Turning Radius: 2400mm (The left rear wheel)
 (3) Driving System: Hydraulic converter, four wheel drive
 (4) European quick coupling system
 (5) Hydraulic joystick control.
- 6.0 Brake System
 (1) Service Brake: Safer air assist disc brake braking system
 (2) Parking Brake: Hand operated (Disc brakes)
- 7.0 Tyre
 (1) Model: 16/70-24 (2) Width: 410mm (3) Diameter: 1075mm
 8.0 Wheelbase: 2550mm
 9.0 Track: 1700mm
 10. System pressure: 20Mpa; Hydraulic output: 96L/min
 11. Machine weight: 6900KG



TL2500

TELESCOPIC
WHEEL LOADER



MAIN TECHNICAL SPECIFICATION

- 1.0 Engine Details
 - (1) Model: YUCHAI Engine
 - (2) Engine Type: In-line arrangement, water-cooled, four-cycle diesel, turbocharged Engine
 - (3) Rated Power: 85KW
 - (4) Rated Speed: 2400 r/p. min (rpm)
 - (5) Optional Engine: CUMMINS engine (74.5KW)
- 2.0 Transmission System
 - (1) Hydraulic converter + gearbox + drive shaft + hub reduction axles
- 3.0 Bucket
 - (1) Bucket Capacity: 1.5m³
 - (2) Bucket width: 2300mm
 - (3) Bucket type: Heavy-duty bolt on teeth
 - (4) Rated Load: 3000kg including attachment or bucket
- 4.0 Overall Dimensions
 - (1) Overall Length: 6860mm
 - (2) Overall Height: 2980mm
 - (3) Overall Width: 2300mm
 - (4) Lifting to bucket hinge pin Height: 5400mm
- 5.0 Operating Specifications
 - (1) Steering System: Articulated frame with hydraulic power steering
 - (2) Min Turning Radius: 5800mm
 - (3) Driving System: Hydraulic converter, four wheel drive
 - (4) European quick coupling system
 - (5) Joystick control
- 6.0 Brake System
 - (1) Service Brake: Safer air assist disc brake braking system
 - (2) Parking Brake: Hand operated (Disc brakes)
- 7.0 Tire
 - (1) Model: 16/70-24 (2) Width: 410mm (3) Diameter: 1175mm
 - (2) Optional Model: 17.5-25 (2) Width: 440mm (3) Diameter: 1280mm
- 8.0 Wheelbase: 2430mm
- 9.0 Track: 1700mm
10. Operation weight: 7100KG

TL3000

TELESCOPIC WHEEL LOADER



PERFORMANCE AND CHARACTERISTIC

1. Equipped with YUNNEI engine, optional WEICHAJ engine, CUMMINS engine.
2. High quality self-made hydraulic gearbox and driving axle.
3. Choose best hydraulic components, pilot operation, easy and durable.
4. Strong and durable frame, have the automatic flat function in high place.
5. (Quick change)option attachment: wooden fork, pipe, pallet fork, grass fork, rock bucket, bigger bucket, snow bucket, mixing bucket etc.
6. Optional luxurious meter, air conditioner, back camera, more comfortable for driving.
7. High pressure and safer air assist disc brake braking system
8. According to clients request, customize higher dumping and longer arm products.

TL3500

TELESCOPIC WHEEL LOADER



07/08

WZ15-10

BACKHOE WHEEL LOADER



CHINA BACKHOE LOADER SPECIFICATION

TECHNICAL	PARAMETERS
Max. Excavating Depth	2000mm
Max. Excavating Height	3800mm
Max. Excavating Radius	5000mm
Bucket Capacity	0.15m ³
Working Efficiency	20-40m ³ /h
Max. Hauling Force	23KN
Max. Swing Angle of Boom	180°
Max. Dumping Height	2300mm
Min. Turning Radius	3500mm
Max. Dumping Distance	900mm
Loading Mass	1000kg
Lifting Time of Movable Arm	4.5s
Falling Time of Movable Arm	3s
Sum. Time	10s
Max. Breakout Force	20kn
Model	YUNNEI engine (Standard)
Optional brand	YANMAR or CUMMINS or KOHLER
Rated Power	37kw (50HP)
Rated Revolution	2400r/min
Working Pressure	20MPa
Max. Flux	25ml/r
Total Weight	3800kg
Grade ability	25%
Walking Speed	≤20km/h
Distance Between Axles	1725mm
Min. Ground Clearance	230mm
Overall Dimension (L×W×H)	5800×1600×2760mm
Tire model	20.5-16 or 10-16.5



09/10

WZ22-16

BACKHOE
WHEEL LOADER

COMFORT
EDITION



CHINA BACKHOE LOADER SPECIFICATION		
WZ22-16	Overall dimension	6200x1750x2900mm
	Rated load	1600kgs
	Operate weight	4100kgs
	Bucket width	1750mm
	Bucket capacity	1m³
	Dig bucket capacity	0.18m³
	Dumping height	2700mm or customized
	Digging depth	2500mm or 3500mm or customized
Engine	Standard model	YUNNEI engine
	Rated power	42KW
	Pattern	In-line, water-cooling, 4 stroke, direct inject
	Storage battery	80 A free-maintenance
	Optional	EURO3/EPA XINCHAI engine EPA3/EPA4 YANMAR/CUMMINS/ KOHLER engine
Transmission	Gearbox model	Hydraulic joystick
System	Axle	50 drive axle(disc brakes)
	Drive model	Four wheel drive
Steering System	Steering angle	±35°
	Min. turning Radius	4600mm
	Pattern	Articulated type full-hydraulic steering
	Service brake	Air over hydraulic, disc brake
	Parking brake	Hand operate
Tyre	Model	20.5/70-16
	Optional model	12-16.5 wider tire
MCG		1 set
Package		2 sets into 1x40HQ

WZ22-16

BACKHOE LOADER

STANDARD
EDITION



WZ25-18

BACKHOE
WHEEL LOADER

STANDARD
EDITION



WZ25-18

BACKHOE
WHEEL LOADER

COMFORT
EDITION



CHINA BACKHOE LOADER SPECIFICATION		
WZ25-18	Overall Dimension	6600x1980x2900mm
	Rated load	1800kgs
	Operate weight	4700kgs
	Bucket width	1980mm
	Bucket capacity	0.8m³
	Dig bucket capacity	0.2m³
	Max. dumping height	2700mm
	Max. digging depth	3000mm or customized
Engine	Model	YUNNEI turbocharged engine
	Rated power	55KW
	Pattern	In-line, water-cooling, 4 stroke, direct inject
	Storage Battery	80 A free-maintenance
	Optional	YANMAR/CUMMINS/KOHLER EPA3/EPA4 engine
Transmission System	Gearbox model	Hydraulic torque converter
	Axle	Wheel hub reducer drive axle
	Drive model	Four wheel drive
Steering System	Steering angle	±35°
	Min. Turning Radius	4600mm
	Pattern	Articulated type full-hydraulic power steering
	Service brake	Air over hydraulic, disc brake
	Parking brake	Hand operate
Tyre	Model	23.5/70-16
	Optional model	14-17.5 or 16/70-20 tire
MCG		1 set
Package		2 sets into 1x40HQ

WZ28-20

BACKHOE
WHEEL LOADER

COMFORT
EDITION



CHINA BACKHOE LOADER SPECIFICATION	
Overall dimension	6800x2000x2960mm
Rated load	2000kgs
Operate weight	5800kgs
Bucket width	1920mm
Bucket capacity	1m³
Dig bucket capacity	0.2m³
Max. dumping height	2700mm or customized
Max. digging depth	3500mm or customized
Dumping distance	1250mm
Engine	YUNNEI turbocharged engine
Rated power	65kw
Pattern	In-line, water-cooling, 4 stroke, direct inject
Optional	YUCHAI or YTO or YANMAR or KOHLER or CUMMINS engine
Transmission system	Gearbox model 265 split type
	Drive model Four wheel drive
Steering system	Steering angle ±35°
	Min. turning radius 4850mm
	Pattern Articulated type full-hydraulic power steering
	Service brake Air over hydraulic, disc brake
	Parking brake Hand operate
Type	Model 1670-20 tire
MOQ	1 set
Package:	1 set in 1x40HQ

CHINA BACKHOE LOADER SPECIFICATION

Total operating weight	7800Kg
Length*width*height(mm)	6239*2258*3760
Wheel base	2250mm
Cab root height	2907mm
Minimum ground clearance	300mm
Loading bucket capacity	1m³
Digging up capacity	38KN
Loading lift capacity	2500Kg
Bucket discharge height	2742mm
Bucket discharge distance	1062mm
Bucket Indicator	yes
Backhoe bucket capacity	0.3m³
Backhoe discharge height	3878mm
Maximum digging depth	4082mm
Bucket slewing angle	180°
Bucket stick revolving radian	180°
Maximum pulling force	39KN
Engine	
Model	YUNNEI engine
Type	Inline, direct injection, four-stroke, liquid cooled, turbo type
Cylinder--internal diameter*stroke	4-102x125mm
Rated power	76KW
Optional brand	YUCHAI(78KW)/CUMMINS(74.5KW) engine
Steering system	
Type	Articulated hydraulic steering
Model of steering control valve	BZ25-250
Steering angle	35°
Minimum turning radius	5018mm
System pressure	16Mpa
Transmission system	
Torque converter	YJ-280
Main drive type	Counter Shaft Power-shift
Type of gearbox	Fixed shaft power shift transmission
Gear	2gears ahead, 2gears reverse
Maximum speed	25Kmh
Axes	
Main transmission type	Double-stage reduction type
Wheel reduction type	One-stage hub reduction
Type	
Tire size	16/17-20
Front wheel pressure	0.22Mpa
Rear wheel pressure	0.20Mpa
Brake System	
Service braking	Air-over-oil caliper disc brake, external, self-regulation, self-balancing
Parking/emergency brake	Operating force to avert brake, manual operating force to relieve brake
Hydraulic system	
Breakout force of bucket	46.5KN
Breakout force of bucket rod	31KN
Lifting time of bucket	5.4S
Fall time of bucket	3.1S
Dumping Time of Bucket	2.0S

Note: Parameters shown in the chart are subject to change without notice.



WZ30-25

BACKHOE
WHEEL LOADER

DELUXE
EDITION



CHINA BACKHOE LOADER SPECIFICATION

Overall Weight	Operating 6600KG	Final Reducer	Single Stage Final Reducer	Cylinder-Inside Diameter/Stroke	4-102x120	Pressure of Back Wheel	0.22 Mpa		
Transport Dimension	Rated Loader of Axle	Transmission System		Rated Power	78KW	Brake System			
L*W*H	6900*2100*3100	Torque Converter		Rated Speed	2400r/min	Service Brake			
Wheel base	2250mm	Model YJ280		Min. Fuel Consumption	≤216g/km.h	Air Over Oil Caliper Brake			
Min. Ground Clearance	300mm	Type		Max. Torque	≥261.7N.M/1800r/min	External Type			
Bucket Capacity	1.3m³	Single-stage Three Elements		Displacement	4.4L	Self-regulation			
Breakout Force	38KN	Max. Efficiency 84.4%		Steering System		Operation Power Implementing brake			
Loading Lifting Capacity	2500KG	Inlet Pressure 0.4Mpa-0.55 Mpa		Model of Steering Device		Manual Operation Power Terminating Brake			
Bucket Dumping Height	3500mm	Outlet Pressure 1.2Mpa-1.5 Mpa		Steering Angle		Hydraulic System			
Bucket Dumping Distance	1062mm	Cooling Method Oil-cooling Pressure Circulation		Min. turning radius		Digging Power of Excavator Grab			
Digging Depth	52mm	Gearbox		Pressure of the system		Digging Power of Dipper			
Backhoe Capacity	0.3 m³	Type		Axle		Bucket Lifting Time			
Max. Digging Depth	4082mm	Fixed Shaft Power Transmission		Manufacturer		Bucket Lowering Time			
Swing Angle of Excavator Grab	190°	Oil Pressure of Clutch 1372Kpa-1569 Kpa		Main Transmission		Bucket Discharge Time			
Max. Pulling Force	38KN	Two Gears Ahead, Two Gears Astern		Type		Time			
Engine	Type	Max.Speed 25Km/h		The parameters are subject to change without notice					
Model	4102 Turbo	Pressure of Front wheel 0.22 Mpa							
Type	In Line Direct Injection Four-Stroke and Injection Combustion Chamber								

WZ30-25

STANDARD EDITION

BACKHOE WHEEL LOADER



WZ30-25

COMFORT EDITION

BACKHOE WHEEL LOADER



WZ40-28

DELUXE EDITION

BACKHOE WHEEL LOADER



CHINA BACKHOE LOADER SPECIFICATION

整机操作重量 Overall operating weight	8125KG	驱动桥 Axle	
运输尺寸 Transport dimension	5919 x 2217 x 3764	生产厂家 Manufacturer	宿桥，一拖开泰装备科技有限公司
长 x 宽 x 高 mm L*W*H	5919 x 2217 x 3764	后桥 桥桥车制厂 Feicheng Axle Factory	
轴距 Wheel base	2200mm	主传动形式 Main transmission type	双级减速式 Double reduction
最小离地间隙 Min. ground clearance	300mm	最终传动形式 Final reducer	一级轮齿减速机 Single stage final reducer
额定斗容 Bucket capacity	1.0m³	额定转速 Rated loader of axle	478.8rpm
额定力 Breakout force	38KN	传动系统 Transmission System	
额定举升能力 Loading lifting capacity	2500KG	变矩器 Torque Converter	
铲斗卸料高度 Bucket dumping height	2742mm	型号 Model	YJ280
铲斗卸料距离 Bucket dumping distance	1062mm	形式 Type	单级、单档三元件 Single-stage three elements
铲斗深度 Digging depth	52mm	最高效率 Max. efficiency	84.4%
额定斗容 Backhoe capacity	0.3 m³	进口压力 Inlet pressure	0.4Mpa-0.55 Mpa
最大挖掘深度 Max. digging depth	4082mm	出口压力 Outlet pressure	1.2Mpa-1.5 Mpa
回转角度 Swing angle of excavator grab	190°	冷却方式 Cooling method	风冷式风冷 Oil-cooling pressure circulation
最大牵引力 Max. pulling force	38KN	变速箱 Gearbox	
发动机 Engine			
型号 Model	YUCHAI engine	形式 Type	定轴式动力换挡 Fixed shaft power transmission
形式 Type	直列、直喷、涡轮增压 In line direct injection four-stroke and injection combustion chamber turbo type	离合操纵机构 Oil pressure of clutch	1372Kpa-1569 Kpa
额定功率 Rated power	78KW or 80KW	档位 Gears	前进 2 档，后退 2 档 Two gears ahead, two gears astern
可选品牌 Optional brand	CUMMINS 74.5KW engine	最高车速 Max. speed	25Km/h
转向系统 Steering System			
转向器号 Model of Steering Device	BZ25-250	轮胎 Tyre	
转向角 Steering Angle	±36°	规格 Model	14-17.5/19.5L-24
最小转弯半径 Min. turning radius	6681mm	前轮气压 Pressure of front wheel	0.22 Mpa
系统压力 Pressure of the system	12Mpa	后轮气压 Pressure of back Wheel	0.22 Mpa
制动系统 Brake System			
行车制动 Service brake	气顶油制动 Air over oil caliper brake	驻车制动 Parking Brake	
	外置式 External type	驻车制动 Self-adjusting	
	自调节 Self-regulation	驻车制动 Self-adjusting	
	操作力实施制 Operation power implementing brake	驻车制动 Self-adjusting	
	手动操作力实施制 Manual operation power terminating brake	驻车制动 Self-adjusting	
液压系统 Hydraulic System			
挖斗挖掘力 Digging power of excavator grab	48.5KN		
斗杆挖掘力 Digging power of dipper	31KN		
铲斗提升时间 Bucket lifting time	5.4S		
铲斗下降时间 Bucket lowering time	3.1S		
铲斗卸料时间 Bucket discharge time	2.0S		
注：以上参数如有变更，恕不另行通知。 The parameters are subject to change without notice			



WZ40-28

COMFORT
EDITION

BACKHOE
WHEEL LOADER



23/24

CHINA BACKHOE LOADER SPECIFICATION

TECHNICAL	PARAMETERS	Summational Time	7.0s
Max.Digging Depth for excavator	4100mm	Max. Breakout Force	10.5kn
Max.Digging Height for excavator	5600mm	Standard engine	YUCHAI turbocharged engine
Max.Digging Radius for excavator	5400mm	Rated Power	85KW
Max. Dumping height for excavator	4300mm	Rated Revolution	2400r/min
Backhoe Bucket Capacity	0.28m³	Optional engine	YUNNEI/CUMMINS/WEICHAH engine
Front Bucket Capacity	1.5m³	Working Pressure	16MPa
Max. Hauling Force	29kn	Max.Flux	63ml/r
Max. Swing Angle of Boom	180°	Total Weight	6800kg
Max.Dumping Height	3500mm	Grade ability	30%
Min. Rotary Radius	5000mm	Walking Speed	≤39km/h
Max.Dumping Distance	950mm	Distance Between Axes	2750mm
Rated Loading Mass	2800kg	Min. Ground Clearance	250mm
Lifting Time of Movable Arm	3.5s	Overall Dimension(L*W*H)	7200*2300*3500mm
Falling Time of Movable Arm	2.5s	Tire	16/70-24 wider tire

WZ40-28

BACKHOE
WHEEL LOADER

STANDARD
EDITION



HR480

LOADER

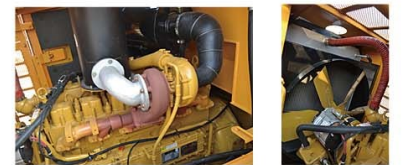


MAIN TECHNICAL SPECIFICATION

Model	HR480	Torque converter	YJ265
Rated loading	2000kg	Gearbox mode	Counter shaft, power-shift
Operation weight	4600kg	Gear shift	2 forward, 2 reverse (1 high speed, 1 low speed)
Rated bucket capacity	1m³		Hydraulic gearshift(optional electric gearshift)
Max. grade ability	30°	Max. speed	28km/h
Min. ground clearance	360mm	Drive axle	Main reducing spiral
Wheelbase	2470mm	Decelerating mode	Circular Arc Bevel gear, single stage
Steering angle	40°	Hydraulic system	System working pressure
Max. dump height	2800mm		16Mpa
Dump distance	820mm	System flow	60L/min
Overall dimension (L*W*H)	6120*2040*2695mm	Service brake	Hydraulic disc brake on 4 wheels
Min. turning radius	4510mm	Parking brake	Flexible shaft operated external drum
Track base	1600mm	Tyre model	16/70-20
Dumping angle	45°	Width	380mm
Function of leveling automatic	Yes	Diameter	1075mm
Brand	YUNNEI	Filling capacity	Diesel fuel tank
Type	Vertical, in-line, water cooling, 4-cylinder, turbo type		50L
Rated power	55KW-65KW	Hydraulic tank	40L
Displacement	3.0L-3.5L	Oil tank	90L
Optional brand	YTO (60KW), YUCHAI(58KW/62KW), CUMMINS (60KW), EPA4 CUMMINS, KOHLER engine		

MAIN TECHNICAL SPECIFICATION

Model	HR380
Rated loading	1600kg
Operation weight	4100kg
Rated bucket capacity	0.7m³
Max. grade ability	30°
Min. ground clearance	320mm
Wheelbase	2270mm
Steering angle	35°
Max. dump height	2650mm
Dump distance	880mm
Overall dimension (L*W*H)	5980*1900*2610mm
Min. turning radius	4720mm
Track base	1500mm
Dumping angle	45°
Function of leveling automatic	Yes
Brand	CHANGCHAI
Type	Vertical, in-line, water cooling, 4-cylinder
Rated power	38KW
Optional brand	XINCHAI Euro3/EPA or YANMAR EPA3/EPA4 or EPA4 KOHLER/CUMMINS engine
Torque converter	YJ240
Gearbox mode	Counter shaft, power-shift
Gear shift	2 forward, 2 reverse (1 high speed, 1 low speed)
Max. speed	25km/h
Main reducing spiral	Circular Arc Bevel gear, single stage
Decelerating mode	Single stage planetary type
System working pressure	16Mpa
System flow	32L/min
Service brake	Hydraulic disc brake on 4 wheels
Parking brake	Flexible shaft operated external drum
Tyre model	23.5-16
Width	330mm
Diameter	920mm
Diesel fuel tank	50L
Hydraulic tank	40L
Oil tank	70L



HR380

LOADER



25/26



HR680 LOADER

MAIN TECHNICAL SPECIFICATION

Performance	Model	HR680	Torque converter	YJ280
	Rated loading	2800kg	Gearbox mode	Counter shaft, power-shift
	Operation weight	6000kg	Gear shift	2 forward, 2 reverse (1 high speed, 1 low speed)
	Rated bucket capacity	1.5m ³	Max. speed	Hydraulic gearshift/optional electric gearshift
	Max. grade ability	30°	Main reducing spiral	Circular arc bevel gear, single stage
	Min. ground clearance	350mm	Decelerating mode	Single stage planetary type
	Wheelbase	2470mm	System working pressure	16Mpa
	Steering angle	45°	Service brake	Hydraulic disc brake on 4 wheels
	Max. dump height	3100mm	Parking brake	Flexible shaft operated external drum
	Dump distance	930mm	Tyre model	16/70-24
Engine	Overall dimension (L*W*H)	6250x2040x2725mm	Width	410mm
	Min. turning radius	4620mm	Diameter	1075mm
	Track base	1600mm	Diesel fuel tank	50L
	Dumping angle	45°	Hydraulic tank	40L
Function of leveling automatic	Yes	Oil tank	120L	
Brand	YUNNEI			
Type	Vertical, in-line, water cooling, 4-cylinder, turbo type			
Rated power	92KW			
Displacement	5.3L			

MAIN TECHNICAL SPECIFICATION

Performance	Model	HR580	Torque converter	YJ280
	Rated loading	2500kg	Gearbox mode	Counter shaft, power-shift
	Operation weight	5600kg	Gear shift	2 forward, 2 reverse (1 high speed, 1 low speed)
	Rated bucket capacity	1.3m ³	Max. speed	Hydraulic gearshift/optional electric gearshift
	Max. grade ability	30°	Main reducing spiral	Circular Arc Bevel gear, single stage
	Min. ground clearance	360mm	Decelerating mode	Single stage planetary type
	Wheelbase	2470mm	System working pressure	16Mpa
	Steering angle	45°	Service brake	Hydraulic disc brake on 4 wheels
	Max. dump height	2800mm	Parking brake	Flexible shaft operated external drum
	Dump distance	920mm	Tyre model	16/70-20
Engine	Overall dimension (L*W*H)	6170x2040x2695mm	Width	380mm
	Min. turning radius	4510mm	Diameter	1075mm
	Track base	1600mm	Diesel fuel tank	50L
	Dumping angle	45°	Hydraulic tank	40L
Function of leveling automatic	Yes	Oil tank	110L	
Brand	YUNNEI			
Type	Vertical, in-line, water cooling, 4-cylinder, turbo type			
Rated power	78KW			
Displacement	4.3L			
Optional brand	YUCHAI(78KW),CUMMINS(74.9KW)engine			

HR580 LOADER



MAIN TECHNICAL SPECIFICATION

Performance	Bucket Capacity(m ³)	3.0	Min. Clearance Over Ground (mm)	430
	Operating Weight(kg)	16800	MAX. Tilt Angle(°)	45
	Rated Load(kg)	5000	Transmission	Hangchi Advance Brand
	Brake Mode	Four-wheel hydraulic speed-shoed brake	Brand	WEICHAI WD10GG26E23
	Driving Mode	Four-wheel drive	Optional brand	CUMMINS 6CTA8.3-C215
	Overall Dimensions (mm)(L*W*H)	6250x2950x3490	Type	In-line arrangement, Four-stroke, Water cooled, 6-cylinder diesel engine
	Max. Breakout Force(kN)	163	Rated Output(kW)	900/1300-1500
	Max. Speed (km/h)	40.2	Max. Torque(N.m/rpm)	2000
	Max. Dumping Height(mm)	3185	Engine starting mode	Electric
	Max. Dumping Reach (mm)	1050	Tyre Model	23.5-25
Min. Turning Radius(mm)	6044	Service Brake	Four Wheel Hydraulic speed-shoed brake	
Full Bucket Lifting Time (s)	4.5	Parking Brake	Hand operated	
Total Hydraulic Cycle Time (s)	9			
Tread Width (mm)	2200			
Wheel Base (mm)	3300			

HR880 LOADER



MAIN TECHNICAL SPECIFICATION

Performance	Model	HR780	Torque converter	YJ280
	Rated loading	3200kg	Gearbox mode	Counter shaft, power-shift
	Operation weight	7100kg	Gear shift	2 forward, 2 reverse (1 high speed, 1 low speed)
	Rated bucket capacity	1.7m ³	Max. speed	Hydraulic gearshift/optional electric gearshift
	Max. grade ability	30°	Main reducing spiral	Circular arc bevel gear, single stage
	Min. ground clearance	420mm	Decelerating mode	Single stage planetary type
	Wheelbase	2570mm	System working pressure	16Mpa
	Steering angle	40°	System flow	80L/min
	Max. dump height	3200mm	Service brake	Hydraulic disc brake on 4 wheels
	Dump distance	930mm	Parking brake	Flexible shaft operated external drum
Engine	Overall dimension (L*W*H)	6360x2160x3200mm	Tyre model	17.5-25
	Min. turning radius	4720mm	Width	440mm
	Track base	1650mm	Diameter	1280mm
	Dumping angle	45°	Diesel fuel tank	50L
Function of leveling automatic	Yes	Hydraulic tank	40L	
Brand	DEUTZ	Oil tank	120L	
Type	Vertical, in-line, water cooling, 6-cylinder, turbo type			
Rated power	92KW			

HR780 LOADER





HR08 MINI EXCAVATOR

SPECIFICATION

Technical Details		HR08
Model	Manufacturer	SHANDONG HERACLES MACHINERY CO.LTD
Brand	HR08	HR08
Operating Weight	850kg	850kg
Digging bucket capacity	0.025cbm/100g	0.025cbm/100g
Bucket width	340mm	340mm
Engine	KOOP/CHANGCHAI	KOOP/CHANGCHAI
Rated power	8.6kw/11600/min	8.6kw/11600/min
Displacement	0.499 L	0.499 L
Bore stroke	70x55	70x55
Main pump	CHK-P6.8	CHK-P6.8
Displacement	8.8ml/r	8.8ml/r
Swing motor	SA-TECH(MP-1-160)	SA-TECH(MP-1-160)
Traveling motor	KERSEN 310	KERSEN 310
Travel speed	1.5km/h	1.5km/h
MAIN DIMENSIONS		
Overall dimension(LxWxH)	1872x896x1999 mm	1872x896x1999 mm
Wheelbase	770 mm	770 mm
Total length of track	960mm	960mm
Platform ground clearance	376 mm	376 mm
Platform back turning radius	664 mm	664 mm
Chassis width	896 mm	896 mm
Track width	180 mm	180 mm
Chassis ground clearance	132 mm	132 mm
Track height	320 mm	320 mm
OPERATING RANGE		
Max. Digging depth	1650 mm	1650 mm
Max. Vertical digging depth	1376 mm	1376 mm
Max. Digging height	2365 mm	2365 mm
Max. Dumping height	1655 mm	1655 mm
Max. Digging radius on ground	2540 mm	2540 mm
Min. Rotation radius	1700 mm	1700 mm
Max. Upgrade height of bulldozer blade	165 mm	165 mm
Max. Digging depth of bulldozer blade	170 mm	170 mm

HR16 MINI EXCAVATOR

SPECIFICATION

Technical Details		HR16
Operating Weight	1470kg	1470kg
Digging bucket capacity	0.045cbm/200kg	0.045cbm/200kg
Digging bucket width	420mm	420mm
Engine	Yanmar TNV70	Yanmar TNV70
Rated power	10kw/2200r/min	10kw/2200r/min
Displacement	0.854L	0.854L
Bore stroke	three cylinder, water cool	three cylinder, water cool
Main pump	KDK	KDK
Valve	PERMCO	PERMCO
Displacement	6.8ml/r	6.8ml/r
Swing motor	EATON	EATON
Traveling motor	KOREA DONGHYUN	KOREA DONGHYUN
MAIN DIMENSIONS		
Overall dimension(LxWxH)	3160x1040x2377 mm	3160x1040x2377 mm
Total length of track on land	1450mm	1450mm
Platform ground clearance	437 mm	437 mm
Platform back turning radius	740mm	740mm
Chassis width	1040 mm	1040 mm
Track width	180 mm	180 mm
Chassis ground clearance	132 mm	132 mm
Track height	320 mm	320 mm
OPERATING RANGE		
Max. Digging depth	2150 mm	2150 mm
Max. Vertical digging depth	1740 mm	1740 mm
Max. Digging height	3275 mm	3275 mm
Max. Dumping height	2310 mm	2310 mm
Max. Digging radius on ground	3470mm	3470mm
Min. Rotation radius	1440 mm	1440 mm
Max. Upgrade height of bulldozer blade	262 mm	262 mm
Max. Digging depth of bulldozer blade	192mm	192mm



HR18 MINI EXCAVATOR

MAIN TECHNICAL SPECIFICATION

Technical Details		HR18
Operating Weight	1750	1750
Bucket Capacity	0.06	0.06
Bucket Width	460	460
Boom Length	1823	1823
Arm Length	1130	1130
Swing speed	10	10
Travel Speed	0-2.2	0-2.2
Grade Ability	20°	20°
Ground Pressure	34	34
Bucket digging force	18.2	18.2
Arm digging force	8.7	8.7
Max Traction	17.5	17.5
Model	Landing 080808	Landing 080808
Optional Engine	YANMAR	YANMAR
Rated Power	18.12200	18.12200
Max Torque	88	88
Displacement	1.387	1.387
Cylinders	3	3
Bore and stroke	80x70	80x70
Cooling type	Water	Water
Main pump	Double pump	Double pump
Rated Pressure	18.25	18.25
Main pump Max flow	40	40
Swing hydraulic motor	2.9K-245	2.9K-245
Travel Hydraulic circuit	16	16
Swing hydraulic circuit	16	16
Control hydraulic circuit	5.4	5.4
Pilot pressure	2.5 (L) -3.5 (H)	2.5 (L) -3.5 (H)
Boom cylinder number	1*70240*405	1*70240*405
Arm cylinder number	1*70240*406	1*70240*406
Bucket cylinder number	1*6038*311	1*6038*311
Auxiliary Piping for Hammer	yes	yes

Fuel Tank		30
Hydraulic Oil tank	38	38
Engine Oil	5.5	5.5
Coilover	3.8	3.8
Fuel consumption	2.0-2.5	2.0-2.5
Overall Length	3728	3728
Overall Width	990	990
Overall Height	2300	2300
Superstructure width	690	690
Counterweight ground clearance	460	460
Track ground length	1290	1290
Total track length	1810	1810
Track shoe width	230	230
Total track width	870	870
Track gauge	740	740
Overall dimension		
Min ground clearance	160	160
Min Front Swing radius	1120	1120
Total Swing radius	1900	1900
Door blade width	990	990
Max Digging radius	3620	3620
Max Digging height	2140	2140
Max Digging Depth	3330	3330
Max Dumping Height	2440	2440
Boom offset	240/460	240/460
Boom swing angle	70/62°	70/62°
Door blade width	890*210	890*210
Door blade thickness	220/218	220/218



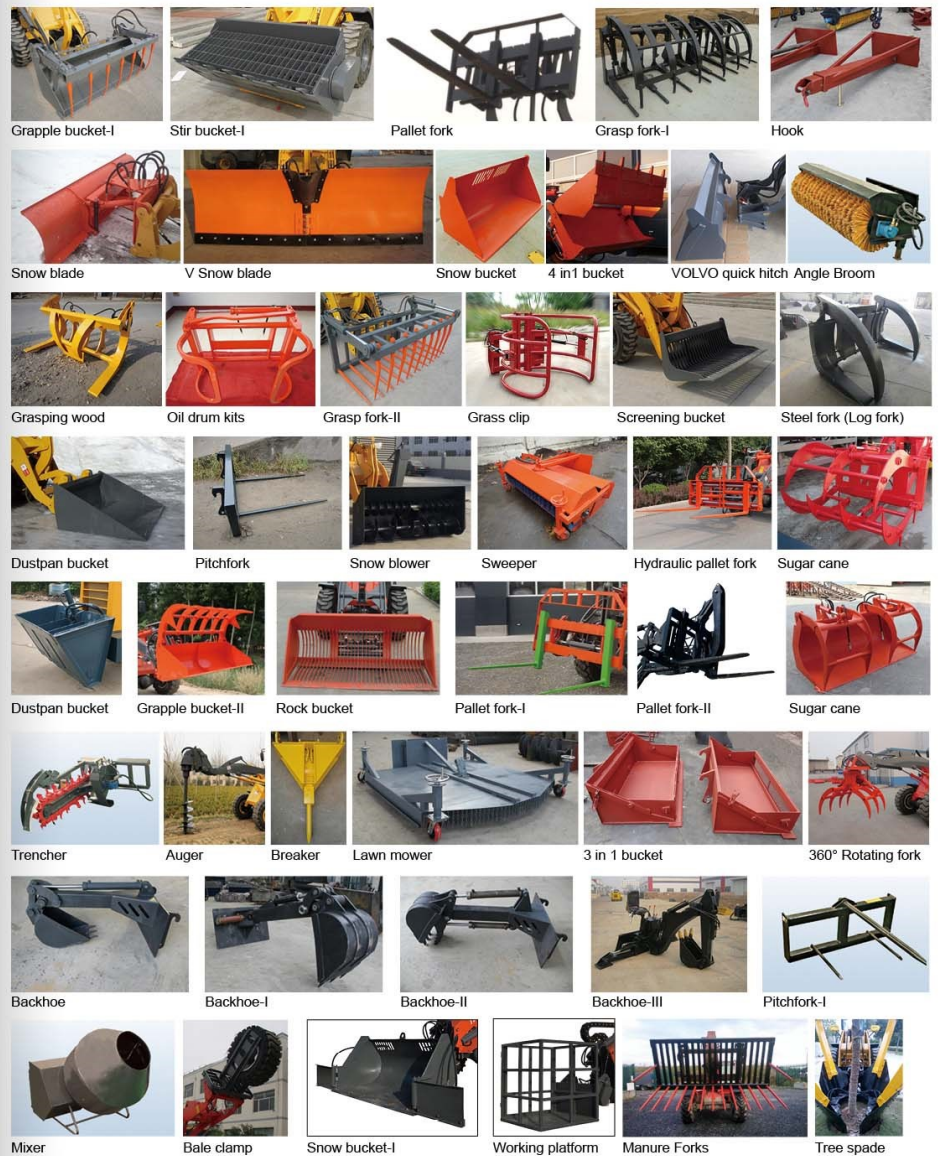
HR22 MINI EXCAVATOR

MAIN TECHNICAL SPECIFICATION

Technical Details		HR22
Operating Weight	2200	2200
Bucket Capacity	0.08	0.08
Bucket Width	460	460
Boom Length	2000	2000
Arm Length	1000	1000
Swing speed	10	10
Travel Speed	0-2.5	0-2.5
Grade Ability	20°	20°
Ground Pressure	34	34
Bucket digging force	18.2	18.2
Arm digging force	10.6	10.6
Max Traction	13.8	13.8
Model	Changchai ZN390Q	Changchai ZN390Q
Optional Engine	YANMAR	YANMAR
Rated Power	22/2200	22/2200
Max Torque	87.5	87.5
Displacement	1.813	1.813
Cylinders	3	3
Bore and stroke	90x70	90x70
Cooling type	Water	Water
Main pump	Double pump	Double pump
Rated Pressure	25/1.5	25/1.5
Main pump Max flow	2.9K-245	2.9K-245
Swing hydraulic motor	2.9K-245	2.9K-245
Travel Hydraulic circuit	16	16
Swing hydraulic circuit	16	16
Control hydraulic circuit	5.4	5.4
Pilot pressure	2.5 (L) -3.5 (H)	2.5 (L) -3.5 (H)
Boom cylinder number	1*70240*415	1*70240*415
Arm cylinder number	1*70240*375	1*70240*375
Bucket cylinder number	1*6038*400	1*6038*400
Auxiliary Piping for Hammer	yes	yes

Fuel Tank		40
Hydraulic Oil tank	60	60
Engine Oil	5.5	5.5
Coilover	4.2	4.2
Fuel consumption	2.5-3.0	2.5-3.0
Overall Length	4200	4200
Overall Width	1200	1200
Overall Height	2010	2010
Superstructure width	1200	1200
Counterweight ground clearance	460	460
Track ground length	1290	1290
Total track length	1810	1810
Track shoe width	230	230
Total track width	1180	1180
Track gauge	740	740
Overall dimension		
Min ground clearance	160	160
Min Front Swing radius	1118	1118
Total Swing radius	1900	1900
Door blade width	1200	1200
Max Digging radius	4023	4023
Max Digging height	4096	4096
Max Digging Depth	2190	2190
Max Dumping Height	3800	3800
Max Digging radius on ground	2960	2960
Boom offset	490/640	490/640
Boom swing angle	70/62°	70/62°
Door blade width	1200*210	1200*210
Door blade thickness	174/218	174/218

OPTIONAL ATTACHMENT PICTURE



Mixer, Bale clamp, Snow bucket-I, Working platform, Manure Forks, Tree spade